

Room Information PALM HOUSE

Carpentaria Suite (Room 1) - Double En-Suite
2 x Double Beds very large room

Kentia Suite (Room 2) - Double En-Suite
2 x Double beds large room

Phoenix Suite (Room 3) - Luxury En-Suite
2 x Double Beds very large room

Palm Suite (Room 4) - Executive En-Suite
Queen Bed with lounge and Balcony

Washington Suite (Room 5) - Luxury En-Suite
2 x Double Beds very large room

Macarther Suite (Room 6) - Double En-Suite
2 x Double Beds medium size room

Queen Suite (Room 7) - Double En-Suite
1 x Double Bed medium size room

Sentry Suite (Room 8) - Double En-Suite
1 x Double Bed medium size room

Bismarck Suite (Room 9) - Double En-Suite
1 x Double Bed small room

Royal Suite (Room 10) - Luxury En-Suite
Queen Bed large room

All rooms in the main house are equipped with Satellite television, direct-dial phones, hairdryers, safes, iron & iron board, fans and also have fully stocked mini-bars (Content can be removed on request). The house also has WiFi Internet connection that is FREE to guests with laptops. Internet access is also available in the entrance hall on the Guest Computer.

Cottage Information PALM HOUSE

Family Cottages (1&2) - Sleeps 4

Front Bedroom 1 x Double bed, rear bedroom 2 x Single beds and access Shower Room. Outside terrace with seating, equipped with Satellite television, direct-dial phones, hairdryers, safes, iron & iron board, fans and also have fully stocked mini-bars (Content can be removed on request).

Carmel Executive Cottage - Sleeps 6

2 Bedrooms have Double beds the third has 2 x Single beds, shared bathroom, large lounge area, sofas and table with 6 chairs and open fire place, equipped with Satellite television, direct-dial phones, hairdryers, safes, iron & iron board, fans and also have fully stocked mini-bars (Content can be removed on request).

Executive Pool House - Sleeps 6

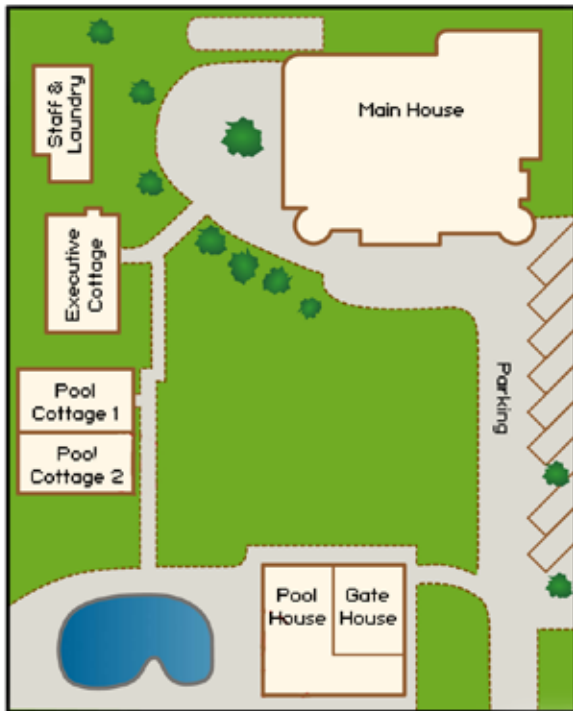
Downstairs: 2 bedrooms - 1 x Double Bed the other 2 x Single beds - shared Shower room separate WC and large lounge. Patio style doors open onto Pool area

Upstairs: 1 bedroom Queen Bed with separate Bathroom with Shower & Bath. Large lounge and balcony overlooking the pool and mountains, all equipped with Satellite television, direct-dial phones, hairdryers, safes, iron & iron board, fans and also have fully stocked mini-bars (Content can be removed on request).

The layout of the house and grounds are on the next page and we always attempt to give our clients the rooms they request, However this is not always possible during busy times. Palm House is a converted colonial house and the room sizes vary although the decor is very similar. Some rooms have garden and mountain views while others do not.

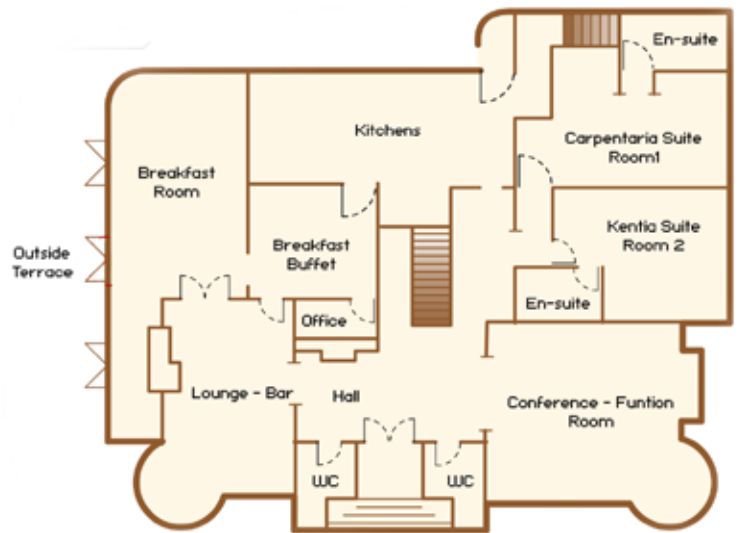
You can see our virtual tour at www.palmhouse-sa.com

Room Location - Information PALM HOUSE

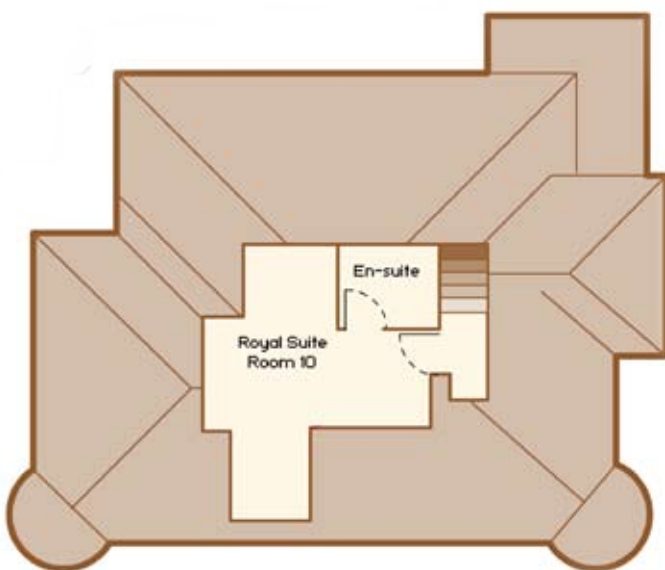


Oxford Street Entrance

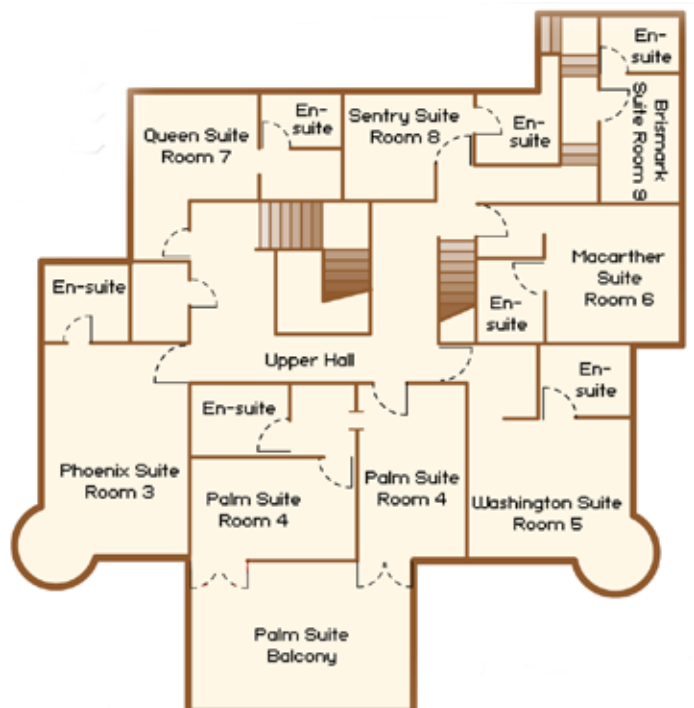
You can see the location of each room on our layout and we hope this will help you to pick your accommodation



Ground Floor



Second Floor



First Floor